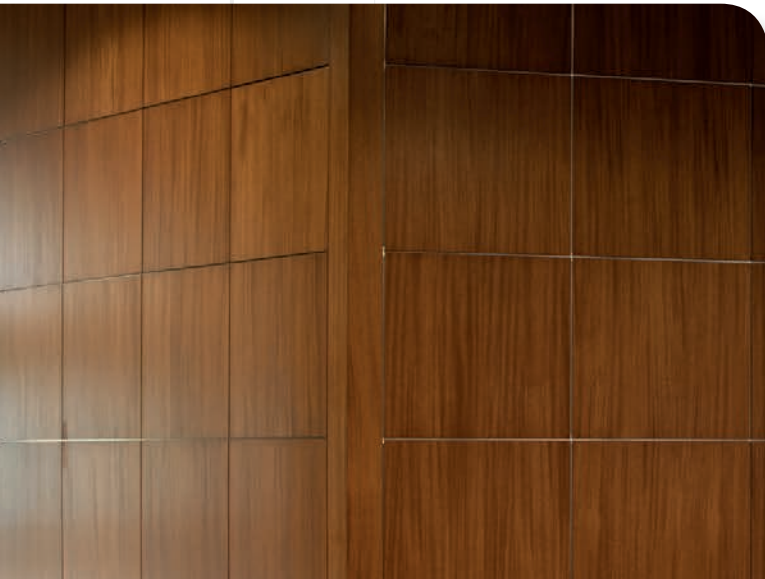




Series 100-500



The ACGI Concerto™ Wall System is comprised of a series of interchangeable aluminum extrusions with an assortment of reveal conditions. Custom extrusions are also available. The wall system makes it possible to combine most of ACGI's perforated and solid panel series, such as Encore™ and Flat Panel. Curved panel applications are also available.

Concerto™ Wall System is available in five interchangeable series:

Series 100 includes various extrusions resulting in a recessed reveal and a variety of trim options.

Series 200 extrusions extend to the face of the wall panel resulting in a framed panel system.

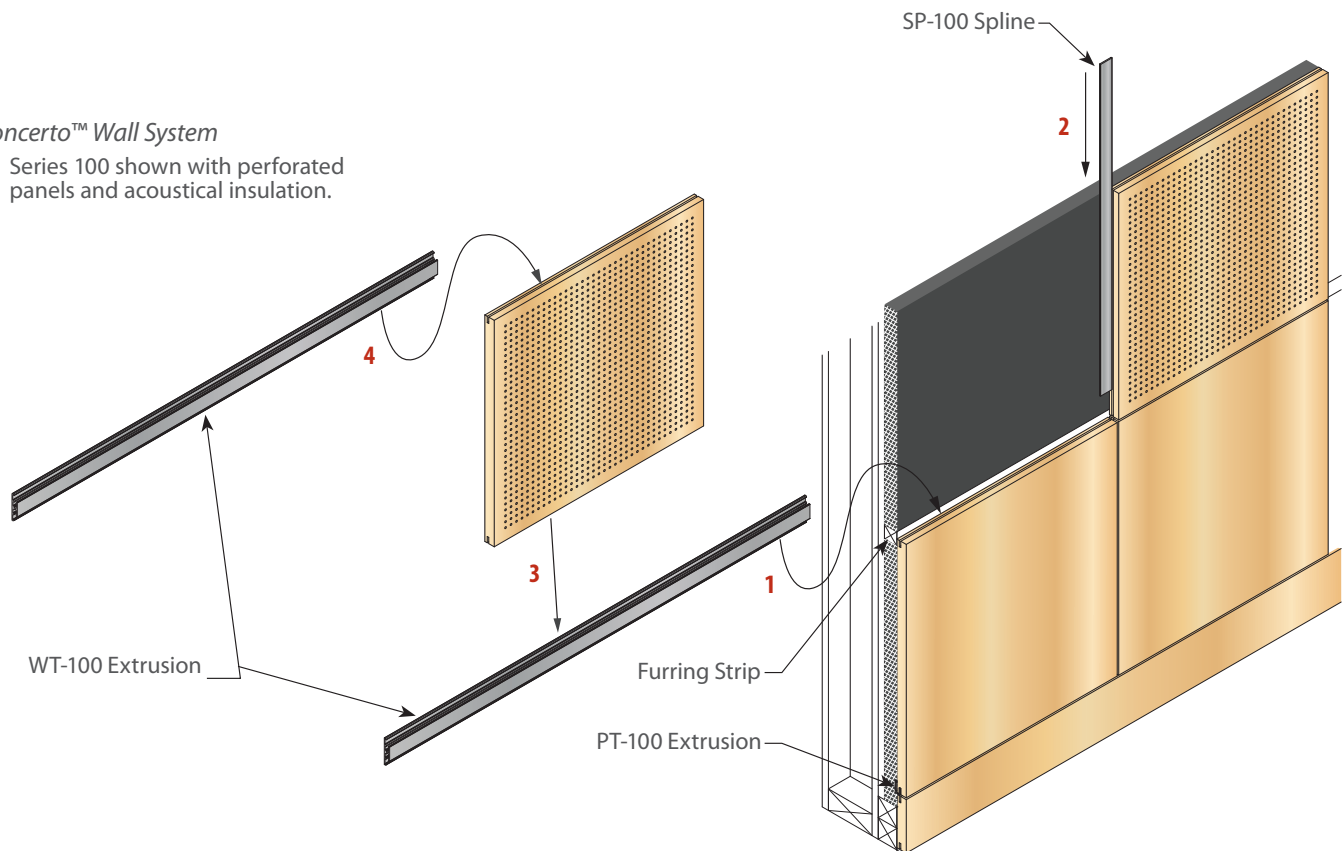
Series 300 extrusions cover the edges of the panel but create a shallower reveal adding emphasis to the extrusion.

Series 400 accentuates thinner architectural panels. The extrusions operate in conjunction with a Z-Clip mounting system to allow easy removal of panels for access. The resulting reveal is recessed to the depth of the panel thickness.

Series 500 adds captured panel perimeter extensions.

Concerto™ Wall System

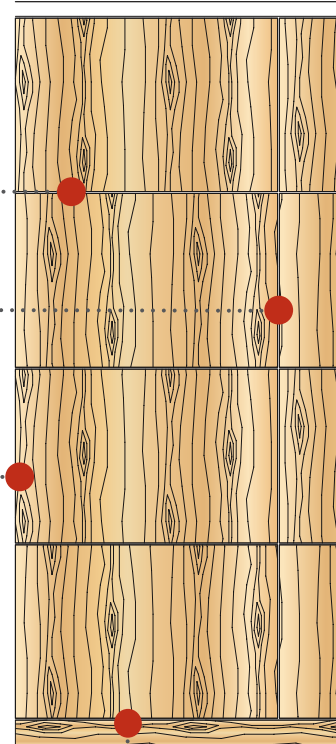
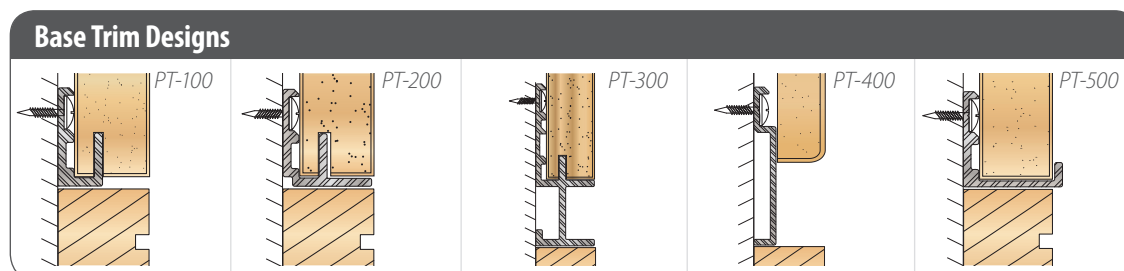
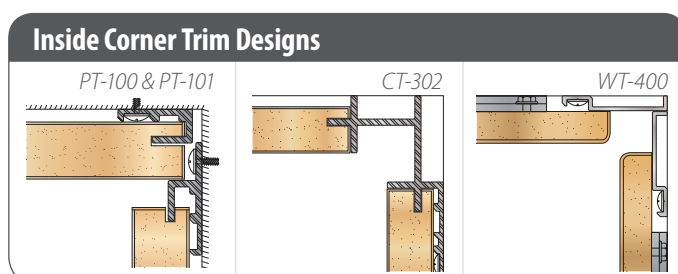
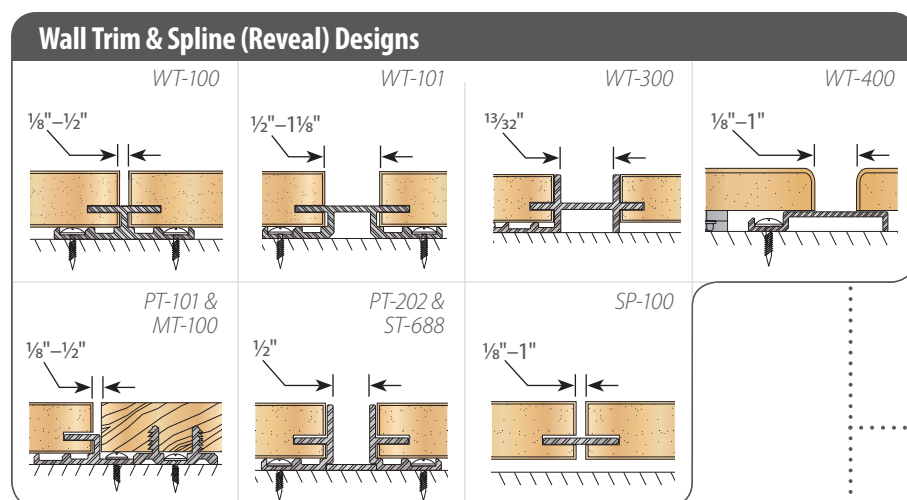
Series 100 shown with perforated panels and acoustical insulation.



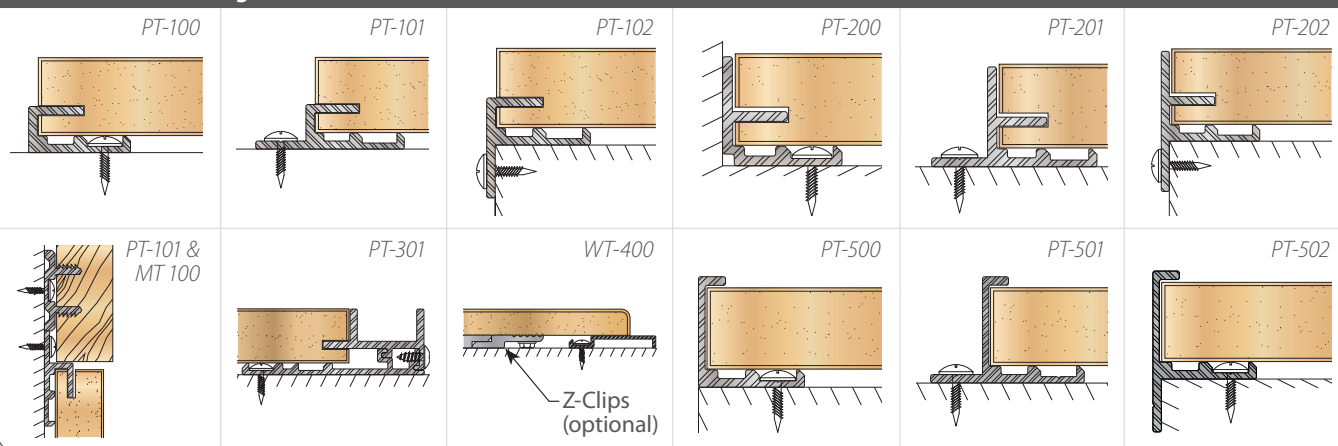
CONCERTO™ WALL SYSTEM

The Concerto™ Wall System is comprised of a combination of separate aluminum extrusions. These consist of wall trim and vertical splines, inside and outside corner trim, and perimeter and base trim. A majority of our extrusions are interchangeable—enabling flexibility in the design of any wall project.

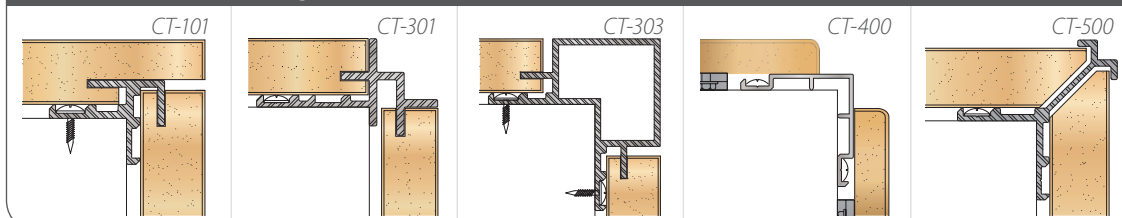
The illustration below shows typical positions and applications of our extrusions, as well as, optional designs. A variety of sizes, shapes, and configurations can be easily incorporated (including access columns). Please contact ACGI or your ACGI Sales Representative for custom applications or special project requirements.



Perimeter Trim Designs



Outside Corner Trim Designs



Concerto™ System — Aluminum Extrusions Standard Finishes



*Black Brushed
Bright Dip*



*Black Buffed
Bright Dip*



Black Etched



*Stainless Brushed
Bright Dip*



*Stainless Buffed
Bright Dip*



Stainless Etched



*Clear Brushed
Bright Dip*



Clear Etched

How To Spec It...

Series

Thickness ●

CW1-4824-C

Width

Height

What It Means... Concerto™ Series 100
48" x 24" panel with 3/4" thickness
(Please specify desired grain direction).

Thickness Reference

A	1/2"
B	5/8"
● C	3/4"
D	7/8"
E	1"
F	1 1/8"
G	1 1/4"
H	1 3/8"
I	1 1/2"
J	1 5/8"
K	1 3/4"
L	1 7/8"
M	2"
N	2 1/8"
O	2 1/4"
P	2 3/8"

LEED CREDIT

MR 4.1, MR 4.2, MR 7, EQ 4.4

OPTIONAL TRIM

ACGI offers a variety of moldings for perimeter, reveals, ceiling, and base. Trim can be finished to either match or complement the wall panel.

FIRE RATING

Solid wood finishes and veneer cores can be provided with a Class A fire rating [ASTM-E84].

DELIVERY, STORAGE & HANDLING

Material must be stored and installed only in secured ambient environment (humidity range 25%–55%, temperature not to exceed 86°F). All windows, doors and wet-work must be complete before installation. Handle carefully to avoid damaging.

WARRANTY

All materials supplied by ACGI are guaranteed against manufacturing defects for one year. Wood stains and colorings can vary over time due to job site conditions and are therefore excluded from this warranty. The contractor shall warrant for one year all work from final acceptance of completed work.